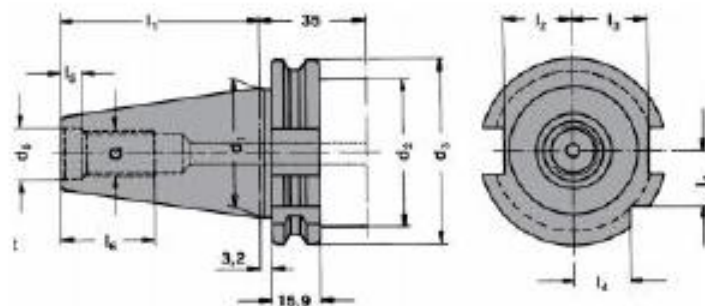
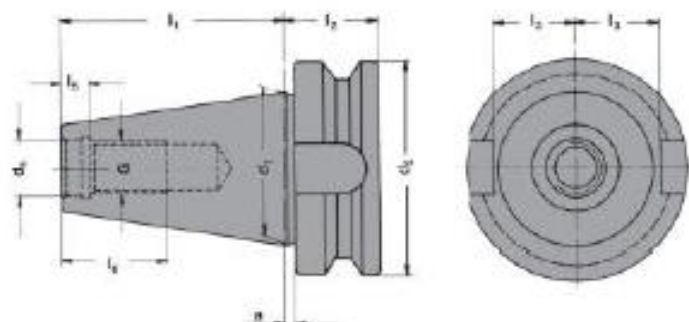


## Toolholder DIN 69871



SK	$d_1$	G	$d_2$	$d_3$	$d_4$	$l_1$	$l_2$	$l_3$	$l_4$	$l_5$	$l_6$	$d_5$	e
30	31,75	M12	13	45	50,00	47,80	16,4	19,0	15,0	5,5	24	M4	21
40	44,45	M16	17	50	63,55	68,40	22,8	25,0	18,5	8,2	32	M4	27
50	69,85	M24	25	80	97,50	101,75	35,5	37,7	30,0	11,5	47	M6	42

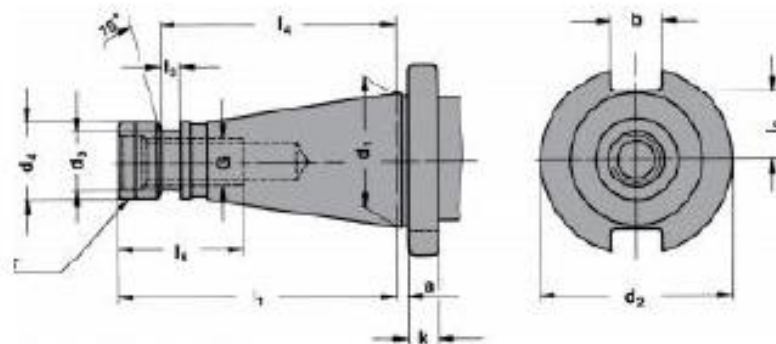
## Toolholder JIS B 6339 (MAS 403 BT)



SK	$d_1$	G	$d_2$	$d_3$	a	$l_1$	$l_2$	$l_3$	$l_4$	$l_5$	e	$d_4$
30	31,75	M12	12,5	46	2	48,4	22	16,3	7,0	24	-	-
40	44,45	M16	17,0	63	2	65,4	27	22,5	8,2	32	27	M4
50	69,85	M24	25,0	100	3	101,8	38	35,3	11,0	47	42	M6

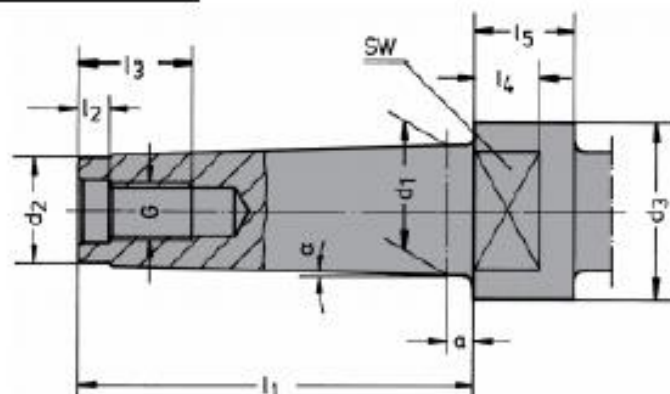
**USI-TECH**

## Toolholders DIN 2080



SK	$d_1$	$a$	$b$	$k$	G	$d_2$	$d_3$	$d_4$	$l_1$	$l_2$	$l_3$	$l_4$	$l_5$
30	31,75	1,6	16,1	8	M12	50,0	-	17,2	68,4	16,2	-	-	24,0
40 ★	44,45	1,6	16,1	10	M16	63,0	21,1	25,0	93,4	22,5	7,0	82,0	32,0
50 ★	69,85	3,2	25,7	12	M24	97,5	32,0	39,2	126,8	35,3	13,0	115,0	47,0

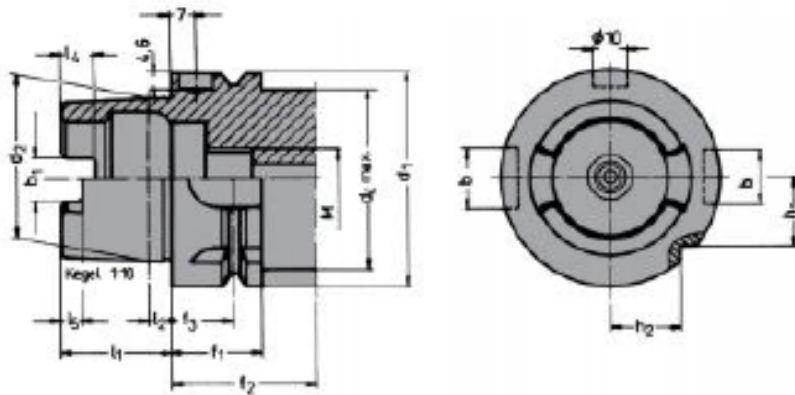
## Toolholder CM DIN 228-1 A



MK	$\alpha$	G	$a$	$d_1$	$d_2$ max.	$d_3$	SW $d^p$	$l_1$	$l_2$	$l_3$	$l_4$	$l_5$
1	1°25'43"	M6	3,5	12,065	9	-	-	-	4	16	-	-
2	1°25'50"	M10	5	17,780	14	-	-	-	5	24	-	-
3	1°26'16"	M12	5	23,825	19	36	24	86	5,5	24	12	18
4	1°29'15"	M16	6,5	31,267	25	43	32	109	8,2	32	15	23
5	1°30'26"	M20	6,5	44,399	35,7	60	45	136	10	40	18	28
6	1°29'36"	M24	8	63,348	51	84	65	190	11,5	47	25	39

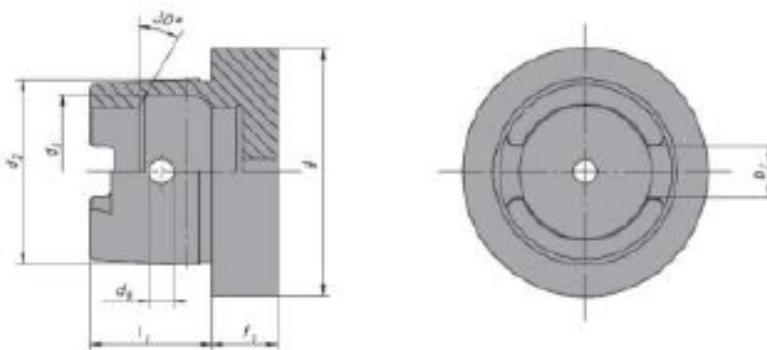
**USI-TECH**

## Toolholder DIN 69893 / ISO 12164-1 (HSK)



$d_1$	$d_2$	$d_4$	$l_1$	$l_2$	$l_4$	$l_3$	M	$f_1$	$f_2$	$f_3$	$b_1$	$b_2$	$b_3$
32	24	26	16	3,2	5,0	3,0	M10×1	20	35	16	7,05	7	9
40	30	34	20	4,0	6,0	3,5	M12×1	20	35	16	8,05	9	11
50	38	42	25	5,0	7,5	4,5	M16×1	26	42	18	10,54	12	14
63	48	53	32	6,3	10,0	6,0	M18×1	26	42	18	12,54	16	18
80	60	67	40	8,0	12,0	8,0	M20×1,5	26	42	18	16,04	18	20
100	75	85	50	10,0	15,0	10,0	M24×1,5	29	45	20	20,02	22	20

## Toolholder DIN 69893-1 (ISO 12164-1) form C



$d_1$	$l_1$	$f_1$	$d_2$	$d_3$	$d_4$	$b_1$
32	16	10	24	21	4	7,05
40	20	10	30	25,5	4,6	8,05
50	25	12,5	38	32	6	10,54
63	32	12,5	48	40	7,5	12,54
80	40	16	60	50	8,5	16,04
100	50	16	75	63	12	20,02

**USI-TECH**